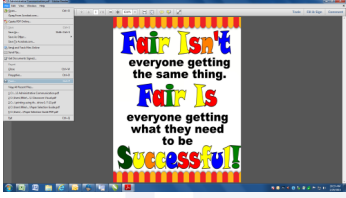
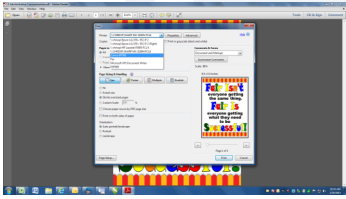


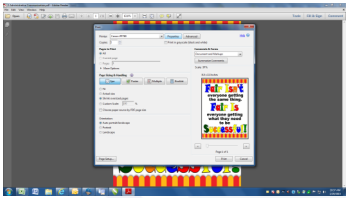
Printing using the Windows Print Driver



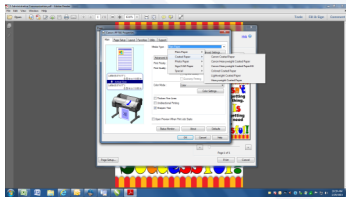
1. Open your document and go to **Print**.



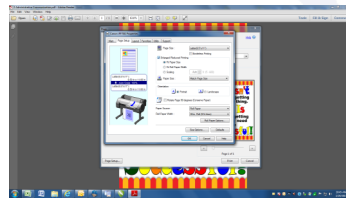
2. Choose your Canon iPF printer model from the **Printer** pull down menu.



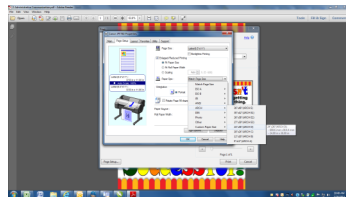
3. Click the **Properties** button to bring up the Canon Properties window.



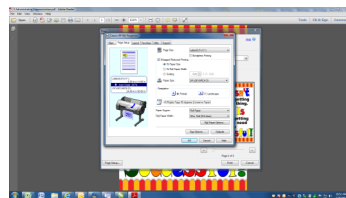
4. You will only use the first 3 tabs on the Canon Properties window. Under the **Main** tab you will change the **Media Type** to match the type of paper you will be printing on.
(Use the Media Selection Guide to select the correct Media Type)



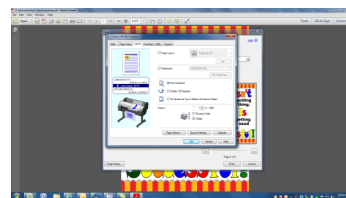
5. Click the **Page Setup** tab. Make sure the **Page Size** matches the original size of your document. Next, check the box next to **Enlarged / Reduced Printing**.



6. Next to **Paper Size** click on **Match Page Size** and select ARCH D 24" x 36". This will determine what size poster you print.



7. Select the **Orientation** of your original document (*Portrait or Landscape*) and then place a check in the box next to **Rotate Page 90 Degrees**.



8. Go to the **Layout** tab and put a check in the box next to **Print Centered**. Click **OK** to apply your settings, and **Print** to print your poster.